



## 2018 Project Review Sheet (2019 Construction)

### City Council District 6

Ballot #6B

<b>Project #</b>	<b>17-696</b>
<b>Project Title:</b>	<b>Crossing Improvements on 8th Ave NW &amp; NW 97th St/NW 100th St</b>
<b>Location:</b>	<b>97 st &amp; 8th ave nw 98117</b>

### SDOT Project Summary

SDOT approves project

- Yes
- Yes, with revisions
- No

Comments: Warrants are not met for marked crosswalks at 8<sup>th</sup> Ave NW and either NW 97<sup>th</sup> or 95<sup>th</sup> Streets. Instead, SDOT recommends curb ramp upgrades at the intersections of 8<sup>th</sup> Ave NW and NW 97<sup>th</sup> and 100<sup>th</sup> Streets.

There is an opportunity to partner with another program:

- Yes
- No

Partnering Program: N/0041

**Total Project Cost: \$ 90,000**

### **Solution and Comments:**

This review has been completed for use in the 2018 Your Voice, Your Choice: Parks & Streets process.

The original request was for a marked crosswalk at 8<sup>th</sup> Avenue NW and NW 97<sup>th</sup> Street. SDOT conducted pedestrian counts at the intersections of 8<sup>th</sup> Avenue NW and NW 97<sup>th</sup> Street and 8<sup>th</sup> Avenue and 95<sup>th</sup> Street and found that pedestrian crossing warrants are not met at these intersections; therefore, SDOT does not support marked crosswalks at these locations.

YVYC 2018: 17-696, NW 97<sup>th</sup> St & 8th Ave NW



SDOT instead recommends rebuilding the curb ramps at all corners of 8<sup>th</sup> Avenue NW and NW 97<sup>th</sup> Street, as well as the southwest corner of 8<sup>th</sup> Avenue NW and NW 100<sup>th</sup> Street, to meet current guidelines. This will improve accessibility from the Ballard Center to the existing marked crosswalks at the intersection of 8<sup>th</sup> Avenue NW and NW 100<sup>th</sup> Street, an all-way stop. SDOT also recommends upgrading the signage at 8<sup>th</sup> Avenue NW and NW 100<sup>th</sup> Street to meet current standards and remarking the existing crosswalks and stop bars at that intersection as needed.

**Image:**

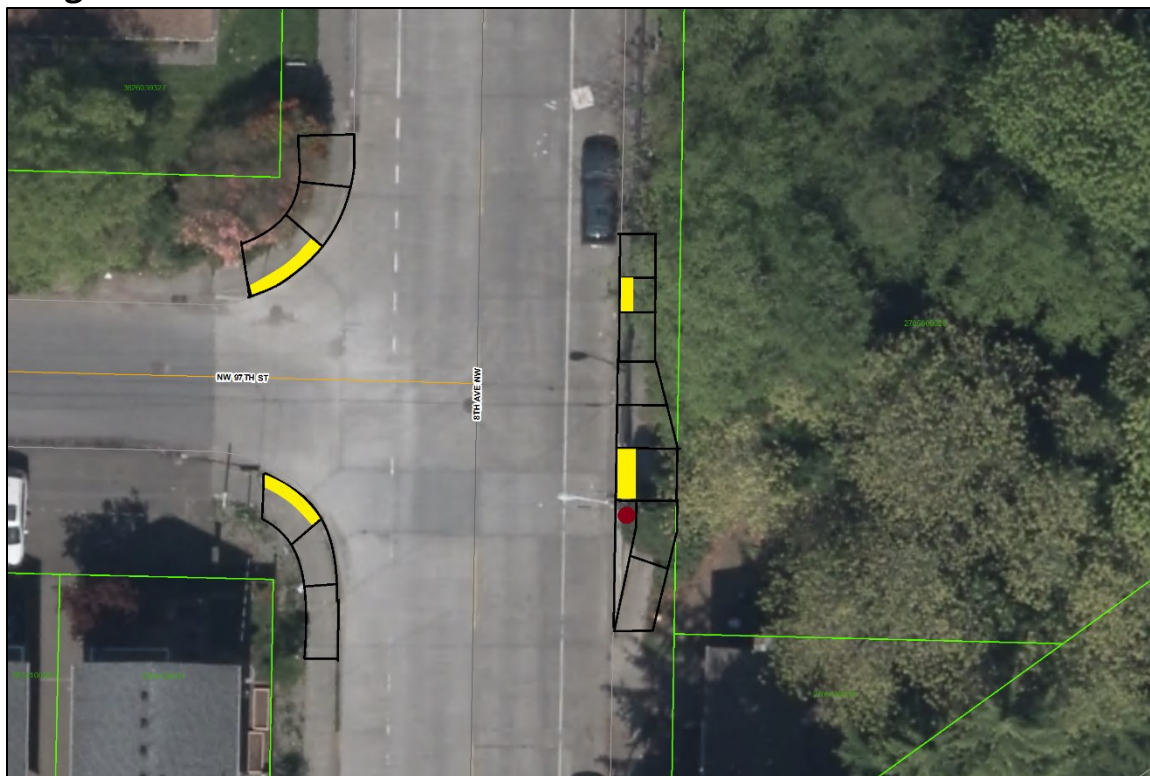


Figure 1: Proposed Improvements at 8th Ave NW & NW 97th St



Figure 2: Proposed Improvements at 8th Ave NW & NW 100th St



---

## Information Provided by Community Members

**Project Idea:** same as above

**Need for Project:** The location is 97th & 8th Ave NW, Ballard Rehabilitation is about a 1/2 block away from this intersection. People come down from the Rehab Center in manual & electric wheelchairs, walkers, canes, and try to cross. No painted lines. No flashing light. Electric lines are right above and can be used to install a light very easily. People have tipped over wheelchairs trying to cross due to uneven pavement, and sometimes washed down gravel. Thank you for reading my request to repair this intersection for the disabled and elderly people.

**Community Benefit from Project:** The people in the neighborhood and most of all the people recovering at Ballard Rehabilitation Center, and senior and disabled low income housing residents.



**Risk Registry:**

<b>SDOT Review</b>	<b>Drainage impacts</b>	<b>Constructability</b>	<b>Community process</b>
Medium	Medium (potential impacts to existing drainage)	Medium (potential traffic control impacts during construction)	Medium (pedestrian impact during construction)

**Cost Estimate:**

<b>Design Phase</b>	
Preliminary Engineering (Survey) Costs	\$2,000
Project Management Costs (City Labor)	\$2,000
Design Costs (Consultant Fees, if externally designed, internal labor otherwise) - use 10% of construction cost for in-house design of relative uncomplicated projects	\$5,000
<b>Subtotal – Design Phase Costs</b>	\$9,000
Design Contingency (10% of Design Phase Subtotal)	\$1,000
<b>Total Design Phase Costs</b>	\$10,000
<b>Construction Phase</b>	
Construction Costs (include urban forestry, signs & markings, traffic control, layout or construction staking as necessary)	\$50,000
Drainage Costs	\$0
Estimating Contingency (10-20%)	\$10,000
<b>Subtotal – Construction Costs</b>	\$60,000
Construction Management (10-25% of Construction Cost)	\$8,000
Construction Contingency (20%)	\$12,000
<b>Total Construction Phase Costs</b>	\$80,000
<b>Total Project Cost = Total Design and Construction Phase Costs</b>	\$90,000